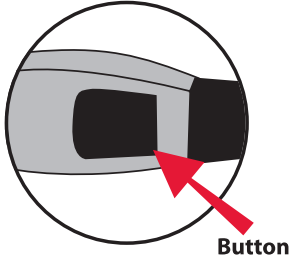


ECHO INSTRUCTIONS

Inserting or Removing the Strap:



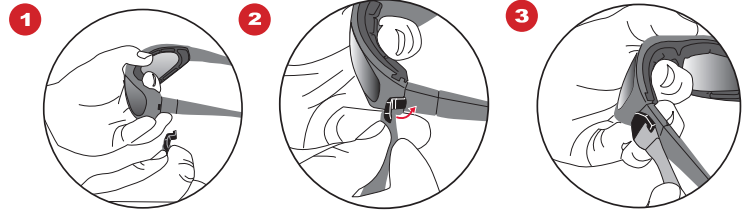
To Insert Goggle Strap:

Press button inside of glasses to release arms. Insert strap into opening and “click” into place.

To Remove Goggle Strap:

Press on the same button to release the strap, then replace the sunglass arms.

Attaching or Removing Retainer Straps:

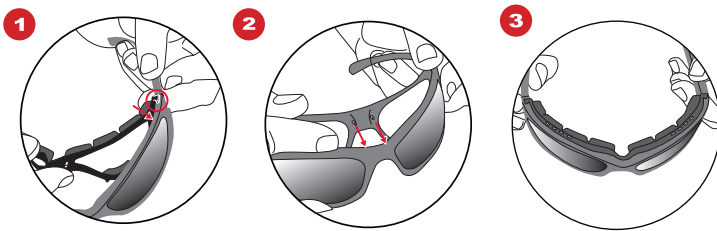


Open the arms of the glasses as though you are going to put them on. Insert the top of the ‘Z’ shaped latch of the retainer strap into the small opening between the frame of the glasses and the arm. Slowly and firmly push the latch towards the arm of the glasses. You will feel it lock into place. Repeat on the opposite side.

To remove Retainer Strap:

Lift the “Z” shaped latch away from the arm and release.

Inserting or Removing the Foam:



To insert foam:

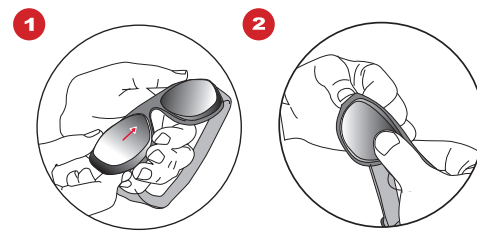
Align attachment on foam with the corner of the frame, press down. Connect 4 holes into the frame. Connect the other corner by aligning and pressing in a downward direction.

Removing foam:

Push far corner of foam in an upward direction until the corner attachment releases.

Slowly peel foam away from frame (Four small hole attachments will detach) then remove other corner of the foam with pushing the in the same upward direction.

Inserting or Removing RX:



Inserting RX Insert:

Grip inner corner holding bezel in place with thumb and index finger, push down to secure bezel in frame.

Removing RX Insert:

Grip the inner corner on both sides of lens bezel with thumb and index finger. From the inside out, push the outer most corner forward “through” the frame.